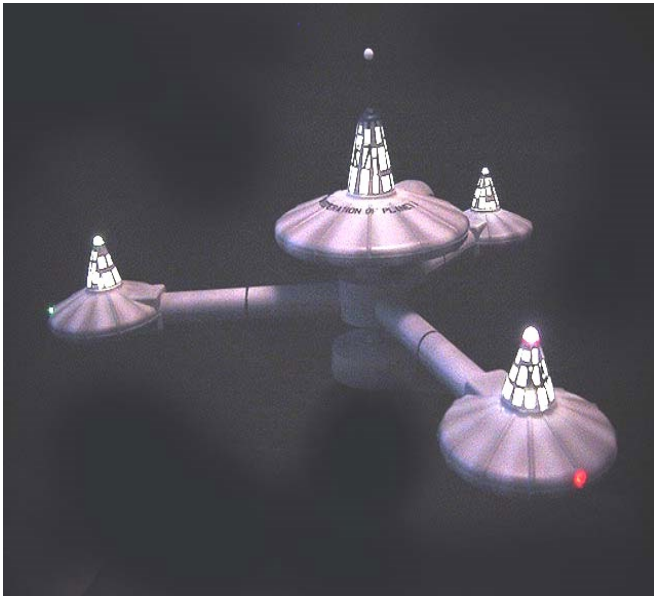


VooDooFX

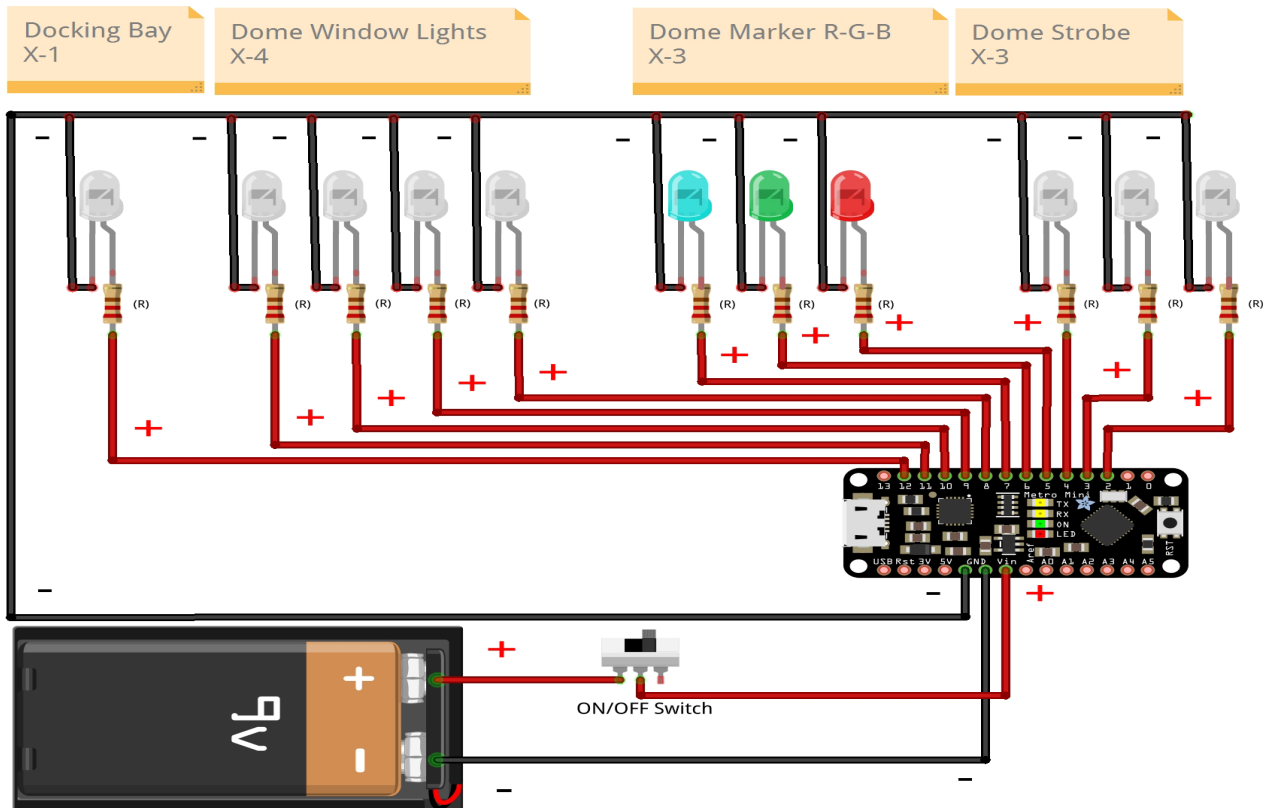
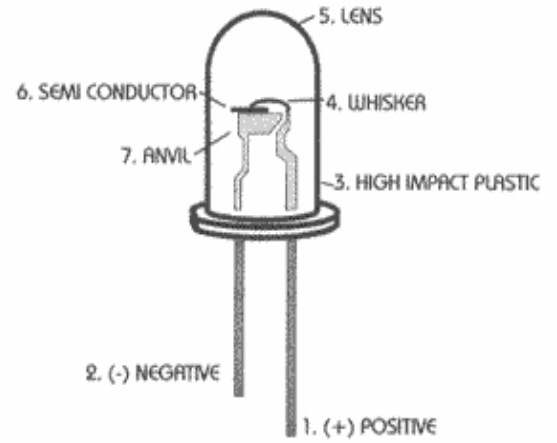
3312 Hoover St, Redwood City, Ca 94063
650-568-3400
www.voodooFX.com

K7 Space Station Kit



(K7SSLK2-1)

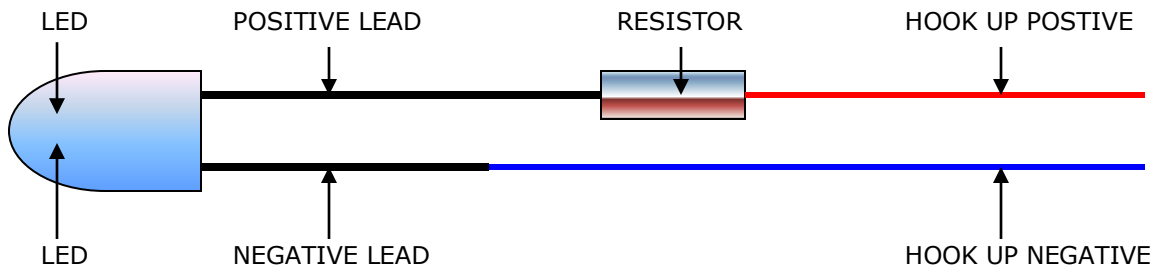
Standard Led



K-7 SPACE STATION WIRING DIAGRAM 2023

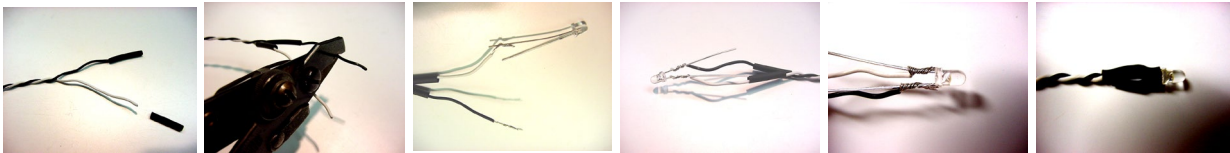
General Instructions For Inline Resistor Hook Up:

Here is the hook up diagram for powering a led or leds direct to power hook up. Each separate led will need a resistor in order to prevent overdriving the led, if not protected with resistor the led will burn out under direct power hook up. Solder all wire connections properly, please study the hook up diagram below and repeat the process for each used led.

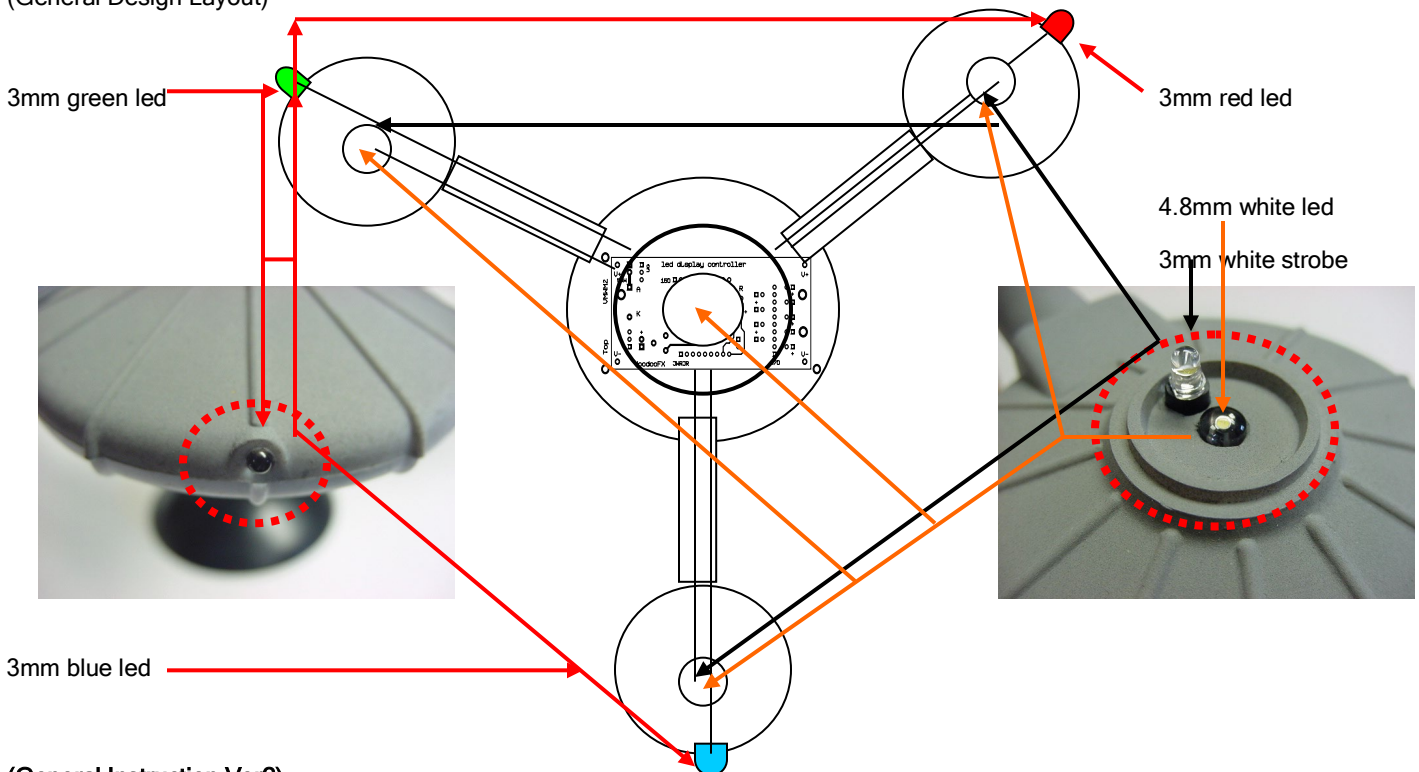


(How to Make a Wired Led)

- 1- Separate the two wires. Pick what color will be positive+ and what color will be negative-.
(Example) Lighter color is positive+, darker color is negative-. This will apply to any color, you make the choice.
- 2- Slide on two pieces of shrink tubing 1/8 - 1/4 "long, Slide past area where wire coating will be striped off.
- 3- Strip back the protected coating and expose the bare wire, 1/8 - 1/4" is about enough to wrap around the led leads. Twist bare wire together until it is a tight, stray wire or fray will get in your way later, the tighter the better.
- 4- Wrap wire around led leads and slide forward to led base. Solder and cut off excess leads.
- 5- Slide shrink tubing over soldered wire and led, heat shrink tubing to finish process.



(General Design Layout)



(General Instruction Ver2)

First start with fitting the model kit together to get a feel for how the model goes together. Next locate all the areas where you will be applying lighting too. Second you can start drilling out the 3 main upper pod parts & the outboard colored led locations (See Photos Above). The main on 4.8mm white lights will be looking up towards the clear window dome, and the 3mm white led strobe or flash effect will be placed at the very top of the clear dome. Prefabricate as much of the led and wire as possible but keep in mind the routing of wire through the main support arms of the pods. The circuit board will be placed in the center of the large main pod and power wire can be run out the bottom for the main support tube, you will need to fabricate a new support tube system if housing the battery in a base. Test all leds before closing up any areas of the pods or dome. Please call us direct if you have any questions 1-650-568-3400

Voodoofox is not responsible for improper installation.
There are no refunds on electrical parts or components. **Custom lighting kits are nonrefundable**
All sales are final. Batteries not included.