

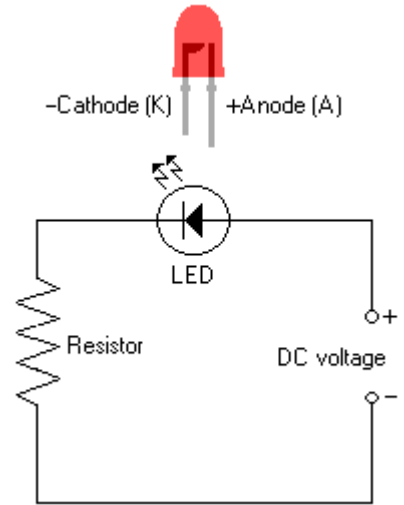
# VoodooFX

3312 Hoover St. Redwood City, CA 94063  
 650-568-3400  
 www.voodooFX.com



**(The Time Machine)**

General Led Circuit

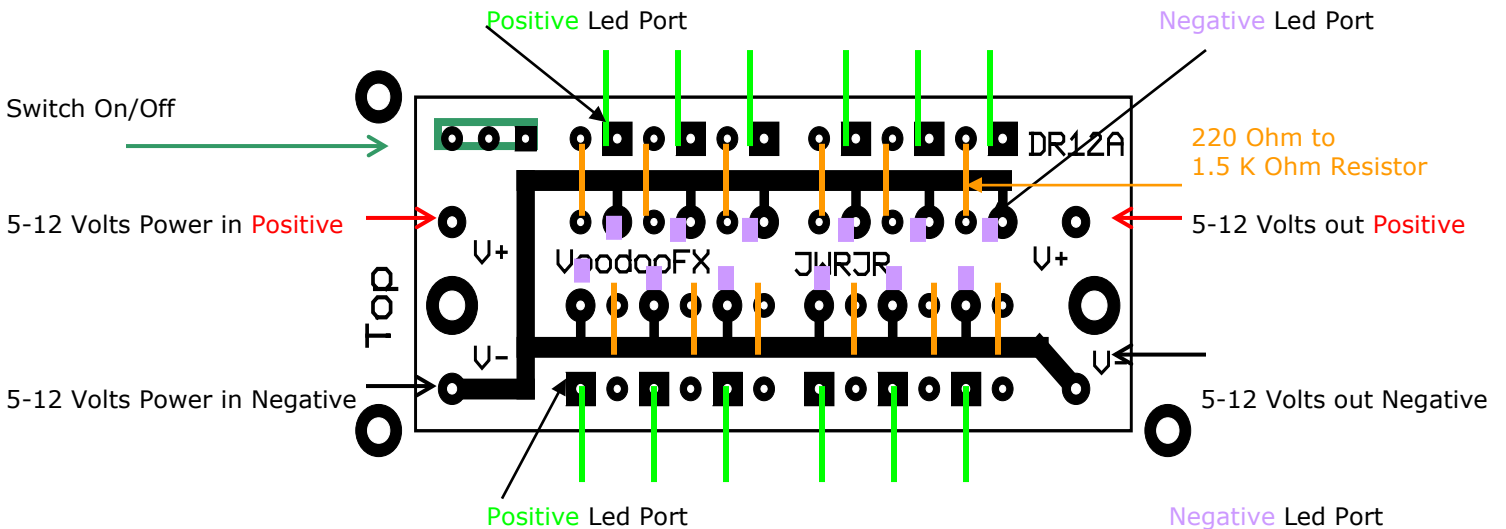


## Instructions: Over View

- 1- Start by getting familiar with the circuit board and led ports.
- 2- There are six led ports on this board, note the positive & negative sides.
- 3- This is where you will put the pre made leds on wire through the ports.
- 4- The tail lights will be all prefabricated and installed one at a time.
- 5- The interior dash will be mounted on the upper half of the model.
- 6- Circuit board will be placed in the engine section of the model.
- 7- You will also need to run one power wire to a 9 volt battery supply.
- 8- Solder experience is required to build this kit.
- 9- Study diagram below on how to make up resistor and put through board.
- 10- Please read all instructions before starting the lighting kit.

**(Circuit Board Diagram)**

**(12 Port Driver Board)**



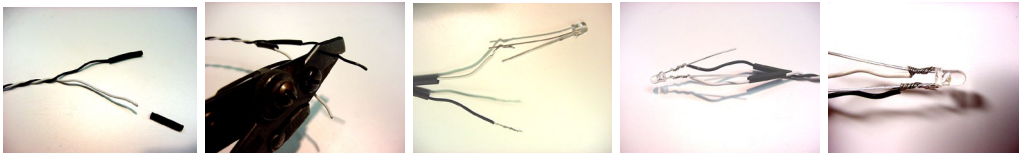
### (General Circuit Board Information)

Studying Circuit Board Diagram-1, the main 9-volt power pads are marked as V- V+. The box high lighted indicates led posts 1-12 for the led lighting effects. Pay attention to the positive and negative sides of the pads, (SQUARE PAD IS +) (CIRCLE PAD IS-) The area marked SW stands for switch or remote on/off switch, pre wire the switch and mount in desired area when project is completed.

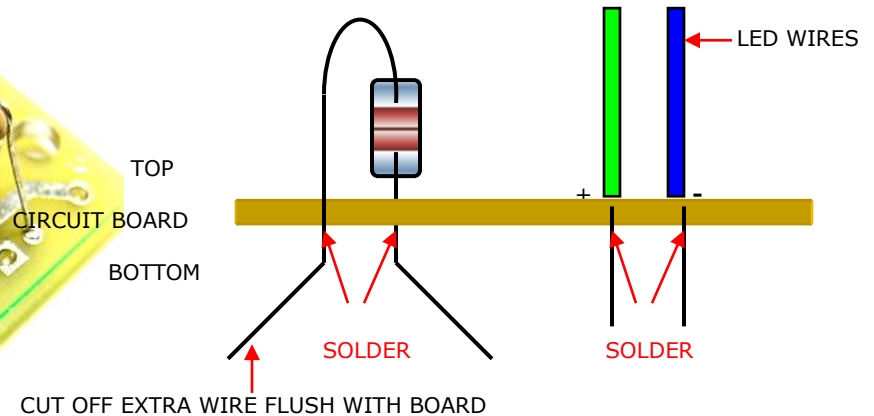
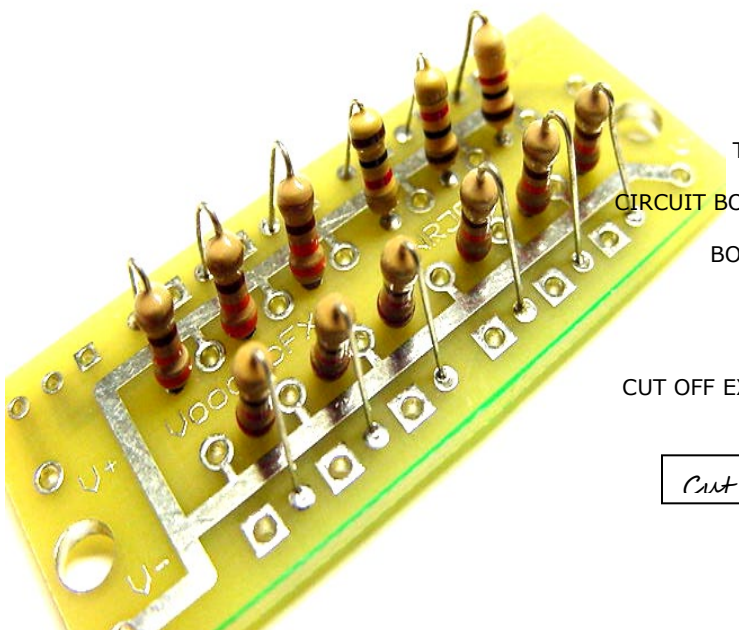
(For bright led effects use : 220 Ohm Resistor) (For Dimmer led effects use : 1.5K Ohm Resistor)

### (How to Make a Wired Led)

- 1- Separate the two wires. Pick what color will be positive+ and what color will be negative-.
- (Example) Lighter color is positive+, darker color is negative-. This will apply to any color, you make the choice.
- 2- Slide on two pieces of shrink tubing 1/8 - 1/4 "long, Slide past area where wire coating will be striped off.
- 3- Strip back the protected coating and expose the bare wire, 1/8 - 1/4" is about enough to wrap around the led leads. Twist bare wire together until it is a tight, stray wire or fray will get in your way later, the tighter the better.
- 4- Wrap wire around led leads and slide forward to led base. Solder and cut off excess leads.
- 5- Slide shrink tubing over soldered wire and led, heat shrink tubing to finish process.



(SOLDER THROUGH BOARD LIKE THIS)

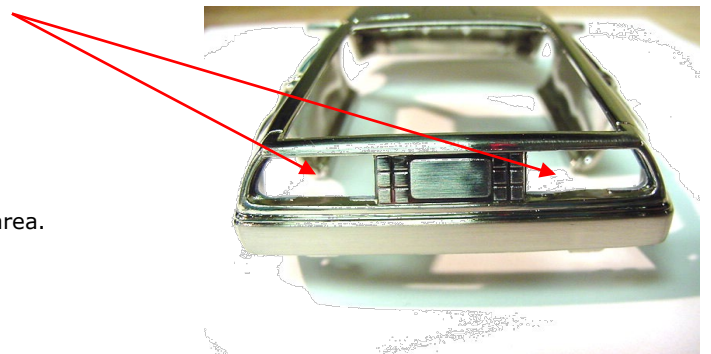


*Cut out Here*

### Instructions: Ver#1

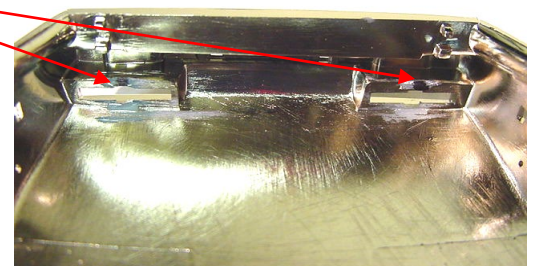
#### Step 1

- 1- Start by familiarizing yourself with all the model parts.
- 2- Locate the upper half of the main body.
- 3- Start by cutting the two main support areas around the tail light area.



- 4- Grind off area to fit head light lens.
- 5- (Note) Make sure to sand off tabs on back head light.

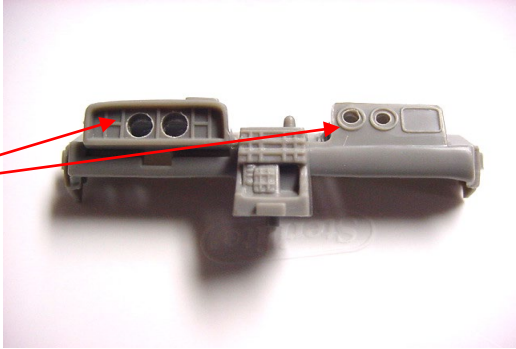
*Cut Out Tab*



Step 2

- 1- Locate the main dash board.
- 2- Drill a small pilot hole in the center of instrument cluster.
- 3- Drill out two small holes with drill bit, working your way to a larger drill bit until it is large enough to meet scale.
- 4- You might add a few more small holes for effect

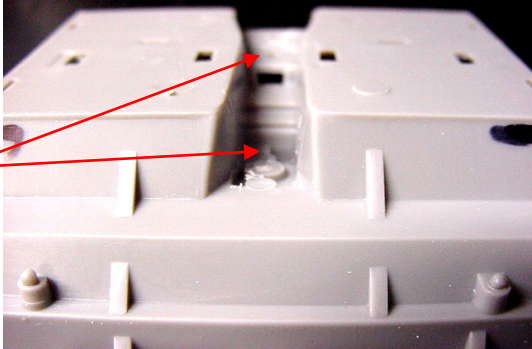
Drill out Here



Step 3

- 1- Locate the upper interior floor pan.
- 2- You will need to remove the tab and alignment pin.
- 3- This will give you a chase way for wire.

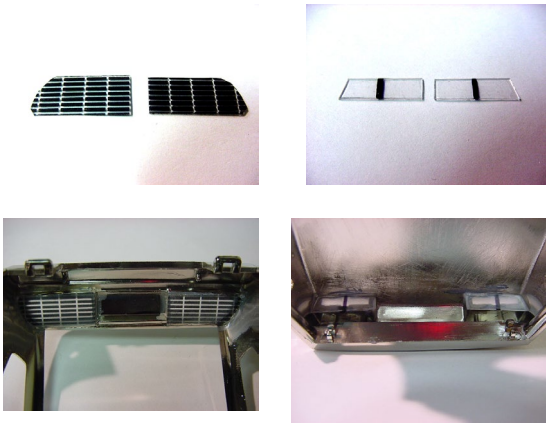
Grind out



Step 4

- 1- Find back tail light chrome part and trace it out on clear lens plastic X 2.
  - 2- Scuff one side of pre cut lens to diffuse new lens cover. You may want to paint the smooth side with a flat black grid pattern, use a piece of metal etch as you template for this effect. (Customer Preference)
- Do the same for the front lens but do not paint grid. (Use white glue to mount lens.)

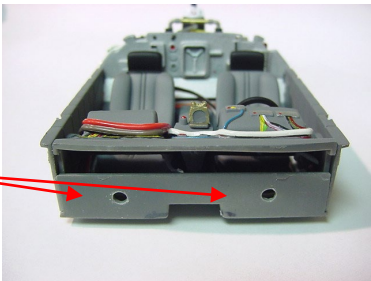
Finished Tail Light Lens



Step 5

- 1- You can prefabricate almost the whole model prior to the first steps above.
- 2- You will need to drill two small areas in the front dash pan to hold the 3 mm dash lights.
- 3- Cut out a small piece of clear lens and mount on the back side of dash. Diffuse on one side.

Drill out Here

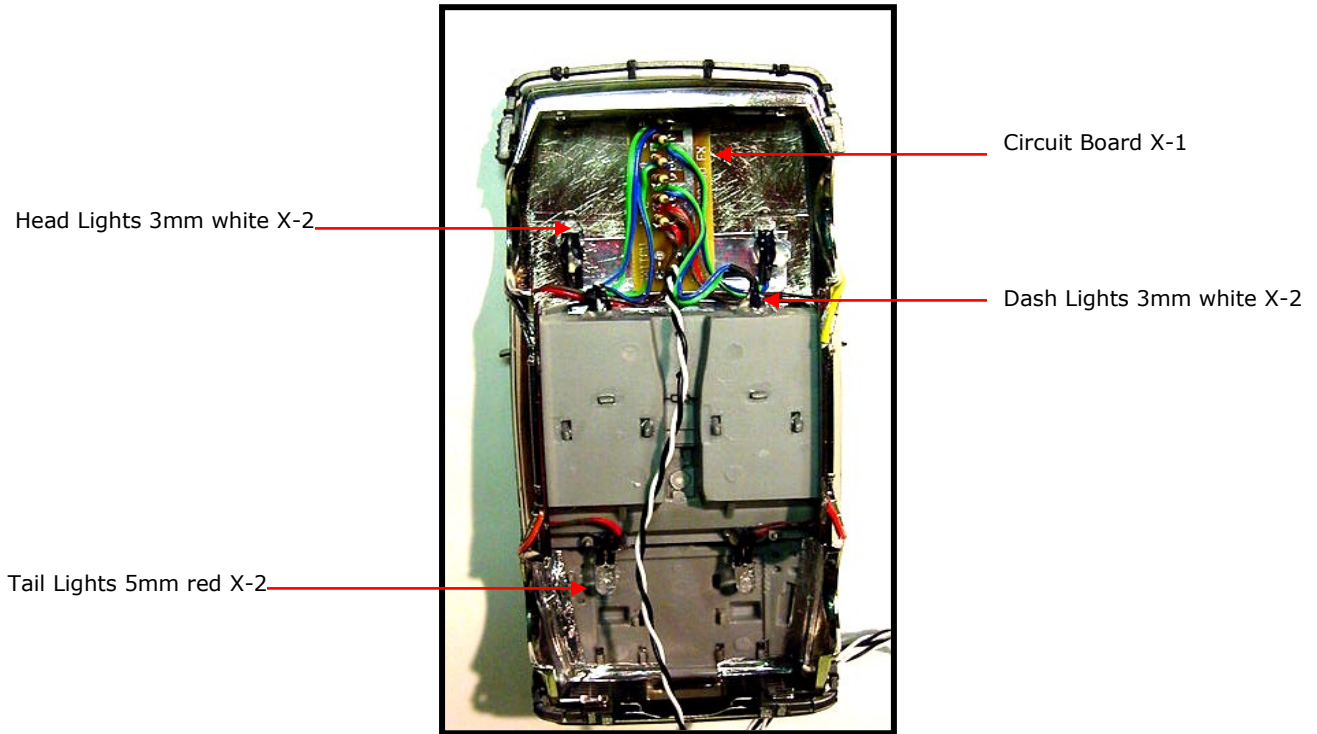
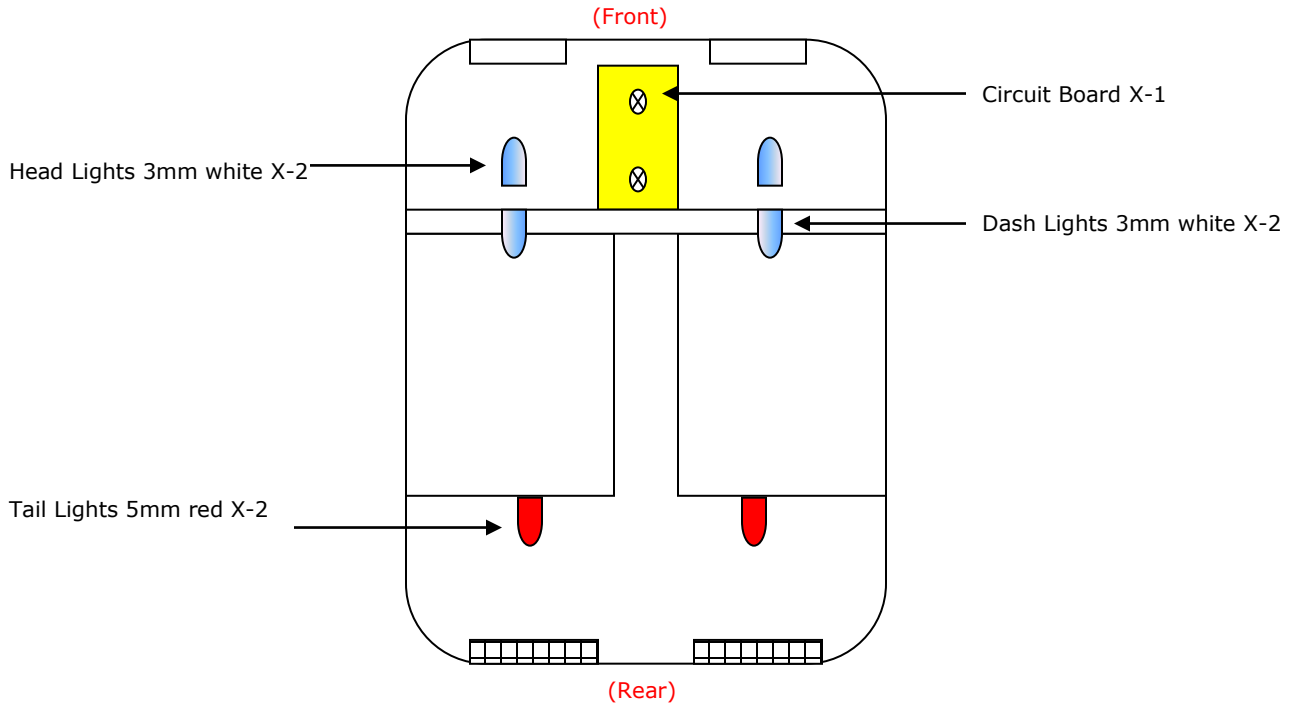


Step 6

1- Install the upper pre built interior. (Apply caution when installing)

2- Note locations and color combinations in diagram below.

3- Mount with a small amount of hot glue



## Step 7

- 1- Check all wiring and align all leds towards desired lighting locations.
- 2- Run power wire to desired area and mount and test all lights.
- 3- Install lower half of body.



Finished Brake Lights



Finished Head Lights

### General Prep

- 1 - Sand down any high spots.
- 2 - Fill in any low spots.
- 3 - Sand entire surface for adhesion.
- 4 - Wash with mild dish soap & warm water.
- 5 - Rinse off entire surface with fresh water.
- 6 - Air dry or dry with clean cloth.
- 7 - Prime full surface with quality prime.
- 8 - Let primer dry 24-48 hours minimum.
- 9 - Paint to according colors and or preference.

### Please Do Not Contact Distributor

If you having problems call VoodooFX.

Phone 650-568-3400 M/F 8-5 pm P.S.T

Email fxshop@yahoo.com

VoodooFX is not responsible for improper installation.

There are no refunds on electrical parts or components.

All sales are final. Batteries not included.

**WARNING:** To guard against injury, basic safety precautions should be observed, including the following:

1. Read and follow ALL safety warnings, instructions and notices.
2. Do not use equipment for other than its intended purpose.
3. Do not alter design or construction.
4. **DANGER:** To prevent the risk of severe or fatal electrical shock. Always disconnect power before performing any maintenance.
5. Do not operate if power cord or plug is damaged.
6. Electrical power supplied MUST match power requirements listed.
7. **CAUTION:** Do not operate without proper electrical ground.

### GENERAL LED HANDLING PRECAUTIONS:

**CAUTION:** The LED can cause permanent damage to eyes at close range.

You should never look directly at the light source of the LED.

**CAUTION:** LEDs are static sensitive devices. Wear grounding wrist strap.

When attaching leads, the leads should be at a point at least 3mm from the base of the LEDs. Avoid damage to LEDs by not soldering more than 3 seconds with a 700\* iron. Do not use LEDs without a current limit resistor.

The forward voltage rating is typical and can vary from part to part. LEDs may work fine connected to a battery of proper voltage, other LEDs will be over driven and destroyed! Always use a resistor in line with LEDs.

**CAUTION:** This kit contains small parts which may be hazardous to children under 12 years. Adult supervision is required.

**Disclaimer Warranty** the materials products are provided "as is" without warranties of any kind either expressed or implied.

To the fullest extent possible pursuant to the applicable law, VoodooFX disclaim all warranties, expressed or implied, including, but not limited to implied

warranties of merchantability, fitness for a particular purpose, non-infringement or their violation of rights. VoodooFX do not warrant or make any

representations regarding the use, validity, accuracy, or reliability of, or the results of the use of, or otherwise respecting, the materials

**Limitations of Liability** Under no circumstances, including, but not limited to, negligence, shall VFX be liable for any direct, indirect, special, incidental or consequential damages, including, but not limited to, loss of data or profit, arising out of the use, or the inability to use, the materials on this site, even if

VoodooFX LLC authorized representative has been advised of the possibility of such damages.

If your use of the product results in the need for servicing, repair or correction of equipment or data, you assume any costs thereof.

Some states do not allow the exclusion or limitation of incidental or consequential damages, so the above limitations or exclusion may not apply to you.